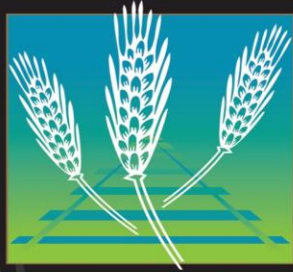


VILLAGE OF
STIRLING



NATIONAL
HISTORIC SITE

EXPERIENCE
THE HISTORY

LEADING RURAL TO GROWTH



September 16, 2021

A LITTLE HISTORY...

NEW STIRLING, ALBERTA

What Natural Resources have we got to have
TO MAKE A TOWN OR A CITY.



The backbone of any town or city is the quality of farming country from which it has to draw its resources. It should have the best of shipping facilities, then to make things more pleasant you want the finest of climate.

New Stirling is in the heart of the great Wheat Belt of Southern Alberta which is noted for producing 45 to 50 Bushels per acre under ordinary conditions, and has produced as high as 67 Bushels per acre. It has a large area of the finest country surrounding it, and it is being populated by a very Wealthy Class of Settlers from across the lines, who thoroughly understand Prairie Farming. It has the best Railway Facilities, having 6 Passenger Trains a Day, besides numerous freights.

The Climate is Ideal being situated in sight of the snow capped Rockies which produces those balmy Chinook Breezes.

Watch us grow to 5000 in 1913

Why Not Buy Lots To-Day Before Prices Advance.

PRICES ADVANCE 25 Per Cent. on **SEPTEMBER 15th.**

Maps, Plans, &c. from W. Fisher, President of Syndicate; A. J. Lipton, Agent on the Spot; S. A. Brubacher, Eastern Representative, Berlin, Ont.; and C. L. Fisher, Manager of Syndicate, 403, Union Bank Building, Winnipeg.

First 30 settlers arrived May 5, 1899.

Stirling was designed following Joseph Smith's "Plat of Zion". The village, originally made up of 47 blocks and 1 "Reserved" block, within one square mile of 640 acres (2.6 km²).

Stirling is one of only two communities that owe its existence to a partnership between The Church of Jesus Christ of Latter-day Saints and Charles A. Magrath of the Alberta Railway & Coal Company, and it is one of only three communities in Canada designated as a National Historic Site.

LOCATION...

The Highway 4 Corridor is at the crossroads of trade.

Highway 3 bisects the region east to west, providing road and rail access to Vancouver and Seattle in one direction, and Chicago in the other.

Highway 36 is a high-load corridor that serves as the transportation corridor from the United States through to the oilsands in Northern Alberta.

The Canamex Highway provides access north to Calgary and Edmonton, and south to California, Texas, and Mexico.



*BLESSING &
CURSE*

1,269 RESIDENTS

Largest Village in Alberta by population – 2019 municipal census

29.4%

Of total debt limit used / few obligations outstanding

90%+

Homes and businesses with fibre to the premise (GB) broadband service



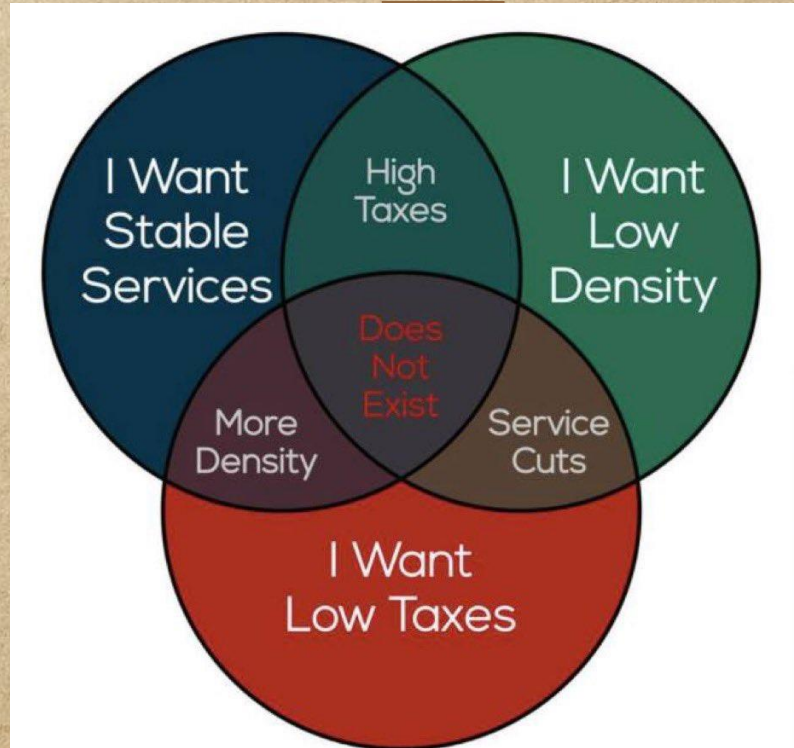
VISION:

To create a vibrant community that promotes sustainable growth, noticeable community spirit, and a safe, caring, and family focused lifestyle.

LEAD TO GROWTH HOW?

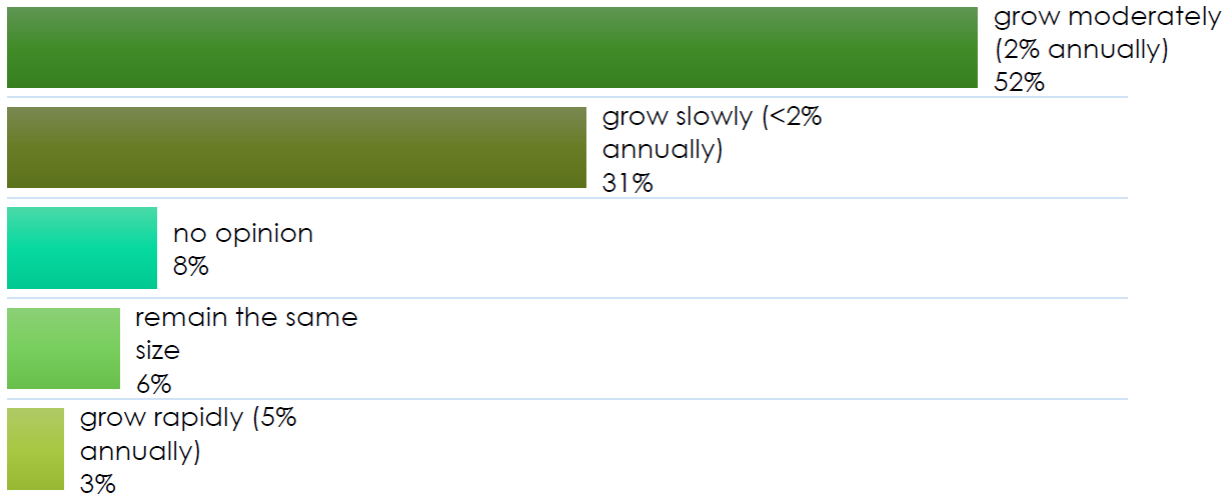
- What pace of growth?
- What type of growth?
- Where should growth occur?
- Investment attraction vs business retention & expansion

LEAD TO GROWTH HOW?



RIGHT PACE...

6 IN THE FUTURE, WOULD YOU LIKE TO SEE THE VILLAGE:



RIGHT TYPE...

9 IF YES, WHICH FACILITIES, SERVICES, BUSINESSES AND INDUSTRIES WOULD BE MOST BENEFICIAL FOR THE VILLAGE?

**Written responses for question 5 were categorized into these themes. Italics represent the most common responses.*

Basic Services

- Grocery store (14)
- Daycare & youth activities (5)
- Seniors facilities & improved amenities (7)

General Commercial

- Retail & supplies (11)
- Dining (11)
- Tourism (4)

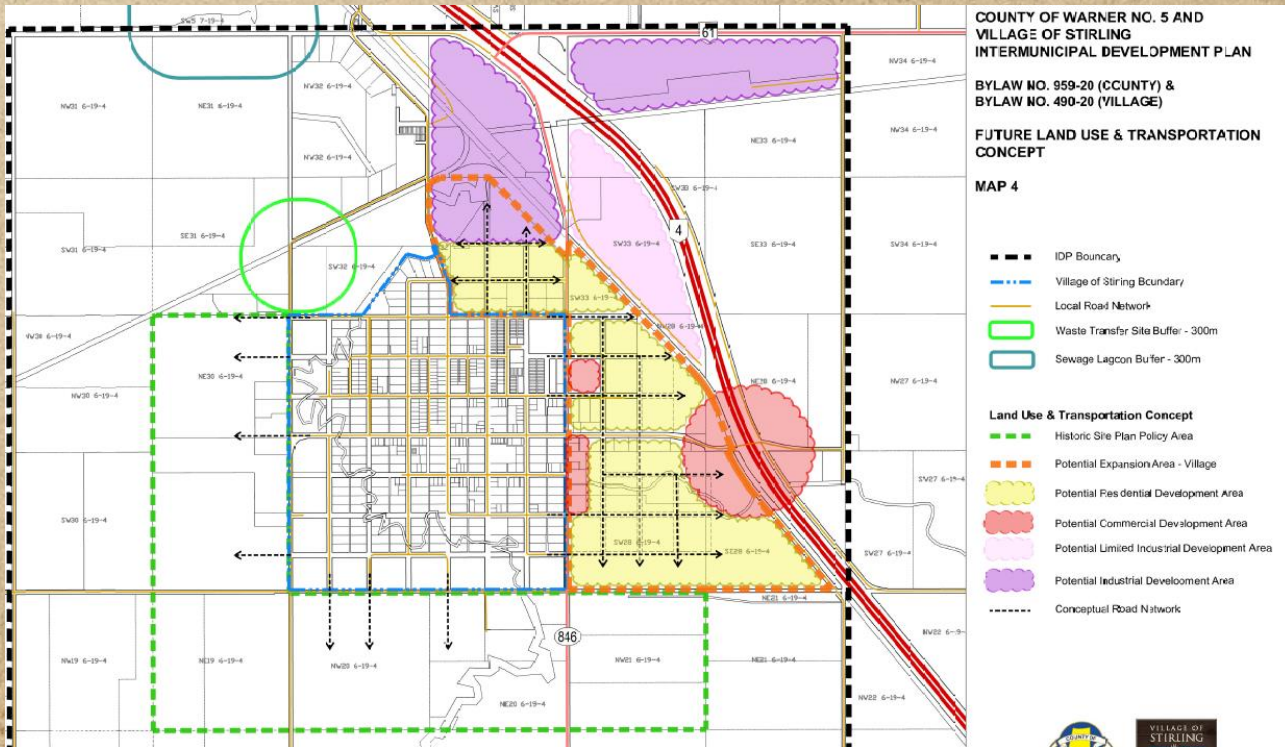
Highway-Related Industries

- Service station (7)
- Autobody, auto-repair (5)
- Truck-stop (2)

Medical, Para-medical & Related

- More physicians, dentists (5)
- Pharmacy (2)

RIGHT PLACE...



RECENT WINS:

- ✦ School modernization (\$15+ M)
- ✦ Net zero electrically for municipal purposes (first in Canada)
- ✦ Dental clinic & Doctor's office
- ✦ Interest free business improvement loan
- ✦ Ridge Utilities Ltd. (municipally controlled corporation)

RECENT WINS:

- ✦ First electrically “net zero” Village in Canada offsetting municipal consumption
- ✦ \$ first, 🌍 second
- ✦ Lead by taking a risk



RECENT WINS:



- ✦ Major expansion and modernization of our K-12 school, with ~350 students
- ✦ Lead through partnerships

RECENT WINS:



- ✦ 5,000 unique in store visitors YTD (even with lingering restrictions)
- ✦ Lead through listening and connecting

RECENT WINS:

✦ Municipally controlled corporation

✦ Energy marketer for electricity, natural gas and internet

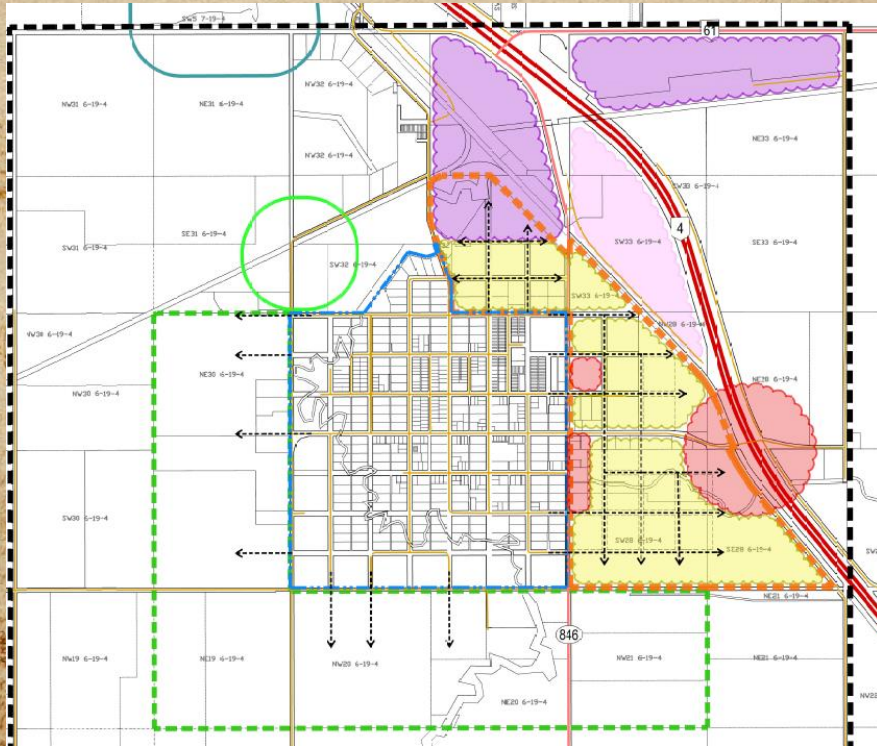
✦ Lead through innovation



ON THE HORIZON:

- ✦ Master Planning – Development, Annexation
- ✦ Stirling Wind Project (28 turbine, 113 MW)
- ✦ Canada's Western Gateway
- ✦ Fire Department – Regional Training Centre of Excellence

ON THE HORIZON:



- ✦ Lead with a plan...
- ✦ Infrastructure Master Plan
- ✦ Long term development plan
- ✦ Annexation strategy

ON THE HORIZON:



Stirling Renewable Energy LP (SRELPL) is a partnership between the Paul First Nation Renewable Energy LP and Stirling Wind Project LP (SWLP). SWLP is a partnership between Potentia Renewables Inc. and Greengate Power Corporation. SRELPL is a special purpose entity created for the Stirling Wind Project.



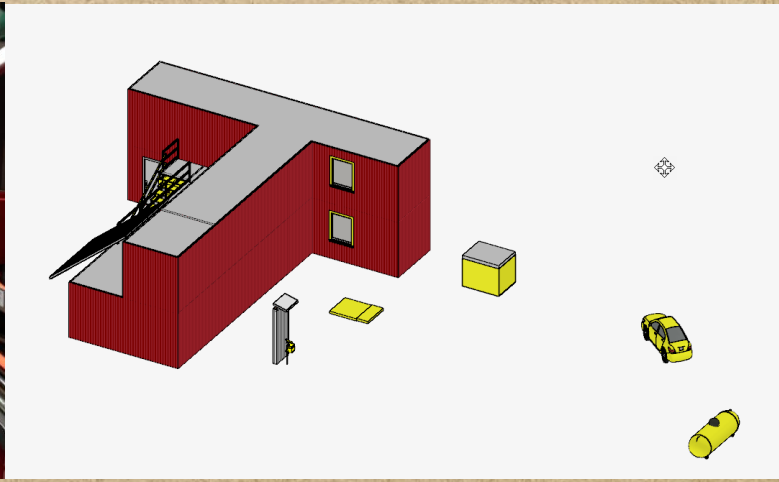
Potentia Renewables Inc. is an independent power producer focused on developing, managing and operating renewable energy systems. Potentia Renewables Inc. is a wholly-owned subsidiary of Power Corporation of Canada, a diversified international management and holding company.



Greengate Power Corporation is a leading renewable energy company based in Calgary, Alberta. To date, Greengate has successfully developed 450 MW of operating wind projects in Alberta. These projects represent over 30% of the wind energy generated in Alberta and provide a clean source of energy to approximately 200,000 homes.

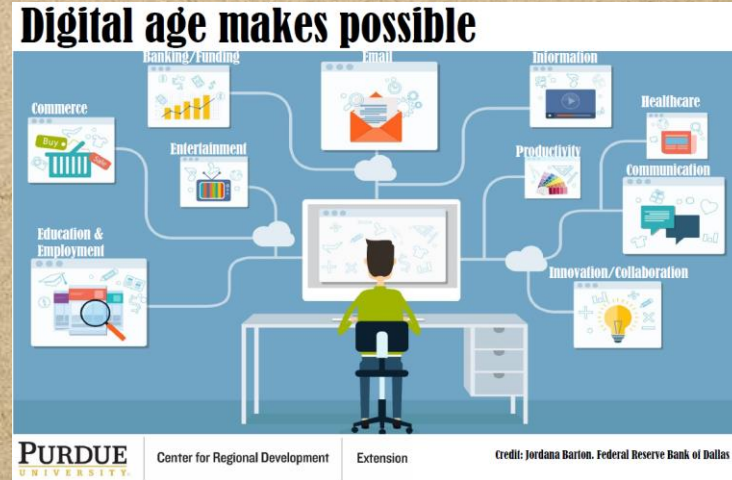
- ✦ Working with developer to position/promote local options where possible
- ✦ Lead through engagement

ON THE HORIZON:



- ✦ Building on local expertise to support the region through a training centre of excellence
- ✦ Lead through your experts

ON THE HORIZON:



- ✦ Leveraging our fibre network to capitalize on work from home trends
- ✦ Lead through technology

REGIONAL COLLABORATION:

Bylaw Enforcement



Ridge Regional Public Safety
Services

5 communities

Solid Waste



Chief Mountain Solid Waste
Authority

12 communities

Planning



Oldman River Regional
Services Commission

41 communities

Economic Development



SouthGrow Regional Initiative

26 communities

Tourism



Mormon Trail Committee

4 communities

Potable Water



Ridge Water Services
Commission

4 communities

Subdivision & Development Appeals

Chinook Intermunicipal
Subdivision and
Development Appeal Board

20+ communities

Others...

- ✦ Chinook Arch Regional Library
System
- ✦ Warner County Regional
Emergency Services Committee
- ✦ Ridge Reservoir Water Quality
Stewardship Initiative

Shared CFO



RSIT

-10+ communities

THANKS!

✉ Lewington@stirling.ca

🖱 stirling.ca

🖱 edaalberta.ca

🖱 chooselethbridge.ca

🖱 ridgeutilities.net

📞 (403) 330 3701



@chooseleth

@stirlingmayor

@edaalberta

